

# Fitzjohn's

OCSS



Community, love of Learning, belonging



Follow us on Twitter  
@FitzjohnsNW3



Autumn Term Issue 9  
8 November 2024

[www.fitzjohns.camden.sch.uk](http://www.fitzjohns.camden.sch.uk)

**TONIGHT—Friday 8 November—Halloween Disco!**  
**Early activities 5.30-6.00pm**  
**Disco 6pm to 8pm**  
**FREE ENTRY**  
**See poster on next page**

### Parent/Children Quotes

Camden is creating online web-based "Report Cards" which families who are looking for schools can use. They've asked us to collect positive quotes from parents and children. If you would like to share your positive experience you may do so here:  
<https://forms.gle/37jWYJzXUQ2FE16j8>

### Tin Pot Orchestra

I want to develop the area where the outside piano is into an music making space. We'd love a cooking pot percussion area so if you have **old metal saucepans and frying pans and wooden/metal serving spoons then please donate them.**

Y1 and Y2 The Christmas Story  
2pm Tuesday 10 December

Come and hear some of the songs the children have been singing:

Year 1 and Year 2: 9.30am Thursday 12 December  
 Nursery and Rec: 2.30pm Tuesday 17 December  
 Year 3, 4, 5, and 6: 9.30am Thursday 19 December

### ODD SOCKS DAY

**Wear odd socks on Tuesday 12 November to help us celebrate anti-bullying week.**

### Class Assemblies

These happen on Fridays at 9.15am and last about 15 minutes. Join Rob afterwards for the class meeting!

15 November Y4

29 November Y5

6 December Reception

**13 December Y3 (note change)**

Nursery do their first assembly in the Spring Term and Y1/2 will be performing a version of the Christmas story at 2pm on Tuesday 10 December.

### Dates for your Diary (so far)

Friday 8 November 6pm Halloween Disco  
 Week of Monday 11 November Y5 Swim (2 weeks)  
 Monday 11 November Y6 Junior Citizens  
 Tuesday 12 November Y2 Nightingale Museum  
 13/14 November Y6 Voices for equality workshop  
**Friday 15 November Y3 Parent/teacher meeting**  
**Monday 18 November School closed to children Parent Teacher Meetings**  
**Tuesday 18 November Y5 Swim (for two weeks)**  
 Thursday 21 November Y6 RAF Museum  
 Monday 25 November Y6 The Magic Circle  
 Thursday 28 November Nursery Little Angel Theatre  
 Tuesday 10 December 2pm Y1/2 Christmas play  
 Thursday 12 December Father Christmas pm  
 Thursday 12 December Rec Stickman am  
 Friday 13 December Christmas Fair pm  
 Tuesday 17 December Cinderella—WHOLE SCHOOL  
 Tuesday 17 December Christmas Lunch and Jumper Day  
 Wednesday 18 December Y3/5 The Little Prince  
 Thursday 19 December 1.30 Magic Show 2.30 parties  
 Friday 20 December School closes 13.30

Happy Diwali to all our families who celebrated last week. We learnt about this festival of lights in assembly on Monday.

**Due to a system outage with the nursing service on before half term all 'flu vaccinations were cancelled. You can still sign up here for when we have a new date (we don't yet know when that will be)**

<https://ncl.schoolvaccination.uk/flu/2024/camden>

### Attendance for the week Our target is 95%

Year 1	94.32
Year 2	92.31
Year 3	97.27
Year 4	95.24
Year 5	95.18
Year 6	94.49
<b>School</b>	<b>94.78</b>

**Well done Y3!**



**FITZJOHN'S PRESENTS**

# **HALLOWEEN DISCO**

**FRIDAY**

**NOVEMBER**

**8**

**EARLY ACTIVITIES  
5:30PM TO 6PM**

**PARTY  
6PM TO 8PM**

**POPCORN | GLOW STUFF | SWEETS | GAMES | RAFFLE**

**Fitzjohn's Educational Psychologist (EP) workshops**

As part of Antibullying Week and our wider work with Camden Educational Psychology Service's Trauma Informed Practice team, we will be holding two EP-led workshops. The workshop will include psychoeducation and discussions on how to help children navigate friendships and help children navigate their emotions. Please see the poster for booking.



# Come along to our Parent Workshops

Delivered by Camden Educational Psychology Service

**Monday 11th November 9.00-9.45**

**Supporting your child to navigate friendships**  
**Supporting you child with their emotions**

Advance booking essential ([Click here](#))



**Drop in to see your child's PSHE lesson following  
the workshop**

After the workshop you can pop into your child's class **9.45-10.30** to take part in a PSHE lesson. (Apart from Y6 as the class are out on a trip).

## FITZJOHN'S SCHOOL TERM AND HOLIDAY DATES: 2025/2026

AUTUMN TERM 2025	
INSET Days - pupils not in school	<b>Monday 1 and Tuesday 2 September 2025</b>
<b>TERM BEGINS FOR PUPILS</b>	<b>Wednesday 3 September 2025</b>
Half term holiday	Monday 27 – Friday 31 October 2025
<b>SECOND HALF-TERM BEGINS</b>	<b>Monday 3 November 2025</b>
INSET Day – pupils not in school (Parent/Teacher Meetings)	<b>Monday 17 November 2025</b>
Term Ends	Friday 19 December 2025 13.30
SPRING TERM 2026	
INSET Day - pupils not in school	<b>Monday 5 January 2026</b>
<b>TERM BEGINS FOR PUPILS</b>	<b>Tuesday 6 January 2026</b>
Half term holiday	Monday 16– Friday 20 February 2026
<b>SECOND HALF-TERM BEGINS</b>	<b>MONDAY 23 FEBRUARY 2026</b>
Term Ends	Friday 27 March 2026
SPRING HOLIDAYS	Monday 30 March – Friday 10 April 2026
SUMMER TERM 2026	
INSET Day - pupils not in school	<b>Monday 13 April 2026</b>
<b>TERM BEGINS FOR PUPILS</b>	<b>Tuesday 14 April 2026</b>
Half term holiday	Monday 25 May - Friday 29 May 2026
<b>SECOND HALF-TERM BEGINS</b>	<b>Monday 1 June 2026</b>
Term ends	13.30 Friday 17 July 2026
PUBLIC HOLIDAYS	
Christmas Day	Wednesday 25 December
Boxing Day	Thursday 26 December
New Year's Day	Wednesday 1 January
Good Friday	Friday 3 April
Easter Monday	Monday 6 April
May Day	Monday 4 May
Spring Bank holiday	Monday 25 May
These are term dates for 2025-2026 (next academic year).	

## Some Magical Highlights from Science Week

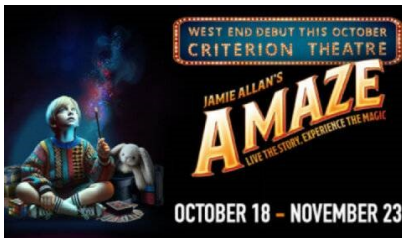


**Dr Mat Pritchard's Science Show**



**Megan Swann's Environmental Magic Show**

I don't think I've mentioned before it but some of you might know that I'm a Member of The Magic Circle and some of my friends and fellow Members are involved in shows that are happening across London this Autumn. Click the image for more information and to book.



**At the Criterion Theatre in Piccadilly Circus.**  
A family friendly magic show by magician Jamie Allen. Some great magic and a lovely heartfelt message runs through the show.

### In The Vaults Waterloo

An immersive show for **adults** only with lots of amazing close-up magicians who perform at your table. Your ticket price also includes 5 cocktails (alcoholic or non-alcoholic). This is great value. (Until 23 November)



**In a secret venue near London Bridge.**  
Another immersive show for **adults** set during the wake of a fictitious magician. A fun story with great close-up magic.

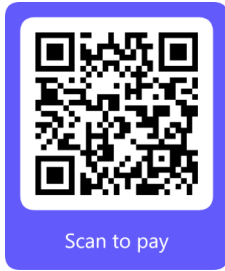
### Underbelly Soho

Asi Wind is a real favourite amongst magicians and has created effects for people like David Blaine. I've seen this show and another show in NYC and he's great.  
**Aimed at 12+ with some strong language**



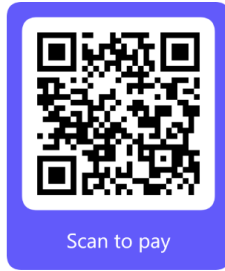
<b>This week in class</b>	
<b>Nursery</b>	Our Early years curriculum 'Understanding the world' asks us to comment and ask questions, observe changes over time, as well as talk about why things happen and how things work- well, we've definitely achieved this during science week! The children have explored a range of activities such as; magnetism, floating and sinking, chemical reactions, changes to an egg, as well as exploring ice melting and chocolate changing from a solid to a liquid. Thank you to Sagi and Aleksandra for joining us in class to carry out experiments with the children. It's been such a fun-filled week of science. This week we introduced the phoneme /s/. We looked at a range of objects starting with the sound, as well as finding out our friend Sam begins with the same phoneme. Our rhyme of the week is 'Incy wincy spider'. I do hope you're singing along at home? Have a great weekend.
<b>Reception</b>	Reception have really enjoyed Science Week this week. After reading Funnybones, we looked at skeletons and discussed all the different parts of the body we know. We also learnt a bit about the brains and how all brains are different which is why we are all different. We had a think about autistic children, and how their brains are wired can sometimes mean they may behave different or struggle to interact with their friends. We also explored melting this week. We learnt that melting happens when things warm up. Chocolate took a long time to melt in our hands, however it was much quicker on the hob when we were melting it to cover apples. In phonics we have been doing lots of segmenting and blending
<b>Class 1</b>	This week in literacy the children wrote a recount all about their half term holiday. They then checked their work to make corrections and alternations. In maths we have focused on writing addition fact families using a bar model and part-whole model. This week has been science week so we have done various activities based around senses, seasons and materials! Our new topic this half term is Toys. We have started planning our class toy museum and toy shop and have drawn some lovely pictures of toy soldiers to display. Well done for a great first week back Year 1!
<b>Class 2</b>	It's been a magic-packed science week this week! On Monday, we learnt all about 'the journey of a germ' with Dani from the Francis Crick Institute. She showed us just how alarmingly easy it is to spread germs, so we've been washing our hands extra carefully ever since. On Tuesday, Dr Matt Pritchard showed us how forces and friction work using a variety of fun equipment. Class 2 were tempted to take up juggling...On Friday, Megan Stevens demonstrated how important it is to look after the world around us, using magic to stress the importance of conserving water, recycling and protecting animals' habitats. Don't forget our trip to the Florence Nightingale Museum next Tuesday 12th November. Children will need to be at school by 8.55, with a packed lunch and coat with a hood. Thank you.
<b>Class 3</b>	A sensational start back to learning for Class 3. The half term break proved to be the perfect opportunity for students to recharge their batteries, as they have come back in full swing. With this week, being science week, we have been spoilt for fun with a visit from The Crick on Monday, a science magic show on Wednesday and an environmental magic show to finish off the week. It has been so nice to see how curious and inquisitive Class 3 are. In writing, we have begun Biographies, focusing on the incredible Mae Jemison. Students have shown such an interest in her life and achievements. Ask your child to tell you about her wonderful life!
<b>Class 4</b>	We have had a fantastic, fun week during science week. We had a scientist from the Crick in helping us investigate sound. We carried out an experiment into the effect of only being able to hear with one ear instead of two. Our findings revealed and helped us come to the conclusion of the importance of having two ears for hearing effectively. We also explored how water changes state. We identified the different states water can be in, as well as the temperatures at which water changes state. We investigated and observed the processes that cause water to change state. This helped us to understand the processes of melting, evaporation and condensation. In maths, we have been learning about area. We learned to find the area by counting whole and half squares, and to draw shapes with a given number of squares. In literacy, we wrote a Haiku poem, proofread and edited pieces of writing and wrote our own spooky stories.
<b>Class 5</b>	This week, Class 5 has been learning in Maths about cube numbers as well as how to multiply and divide whole numbers by 10, 100 and 1,000. In Literacy, we looked into the features of suspense writing, analysing the language and other literary means used to create suspense. As it was Science week, Class 5 had the opportunity to do loads of fun experiments and also visit The Francis Crick Science Institute on Thursday, where we completed different tests to figure out what different white powders were as well as made circuits with different motors and components. In Geography, Class 5 used atlases to find the cities and counties of the UK and in PSHE we spoke about democracy and parliament.
<b>Class 6</b>	Using their research skills, year 6 compiled an information leaflet all about the damage that is being wrought by humans on our rivers and oceans. The theme was 'plastic pollution' and the devastating effect that it is having on our marine wildlife. As part of Science week, we also learned about why scientists classify living things: it's to help identify, group, name and study animals and plants of the world. We also commenced our learning journey on micro-organisms by learning about bacteria, viruses and fungi. In Literacy, we reviewed the features of biographies, focusing on the more tricky aspects including using formal language, subordinating conjunctions as well as relative clauses. In our art lessons with Dawn, the children used the skills of pattern-making (using masking tape), and blending colours to finish their African Batik mobiles - come and see them hanging in year 6. Finally, in Maths, we reviewed the order of operations, and reasoning from known facts using both multiplication and division skills.

# Monthly contributions + gift aid = 68% of FSA revenue



Scan to pay

£50 Monthly



Scan to pay

£100 Monthly



Scan to pay

£200 Monthly

→ <https://www.fitzjohnsprimary.com/>

→ <http://tinyurl.com/fitz50>

→ [leefels79@gmail.com](mailto:leefels79@gmail.com)

→ 07886 933510

## PLEASE HELP CAMDEN FOODBANK



Camden Foodbank is a local charity supporting adults and children in food crisis. In the past 12 months the Trussell Trust group of foodbanks gave over 3.1 emergency food parcels to people in food crisis with over 1.1 million of these parcels being given out to children. The winter months are the worst for people with no access to food as they also need to keep warm to survive.

**HOW CAN YOU HELP?** Please donate **targeted food** to help Camden Foodbank make up emergency parcels or please donate money.

**THIS AUTUMN & WINTER PLEASE HELP US TO FEED LOCAL PEOPLE IN FOOD CRISIS**

### HOW TO DONATE FOOD BY HAND?

DAY	TIME OPEN	ADDRESS
Everyday	8am – 10pm	Camden Town Methodist Church, Wesley Hotel, Camden Town, 89 Plender Street, NW1 0JN.
Everyday	8am – 10pm	The Wesley Hotel, 81-103 Euston Street, NW1 2EZ.
Tuesday	11.30am – 3pm	Camden Foodbank, 14 Pratt Mews, NW1 0AD.
Friday	11.30am – 3pm	Camden Foodbank, 14 Pratt Mews, NW1 0AD.
Sunday	10am – 12pm	Camden Foodbank, 14 Pratt Mews, NW1 0AD.

### URGENTLY NEEDED TARGETED FOOD

- Tinned Meat
- Tinned Fish
- Tinned Vegetables
- Tinned Soup
- Tinned Fruit
- Tinned Tomatoes
- Pasta & Pasta Sauce
- Rice
- Biscuits
- Jam and Honey
- Baked Beans
- Cereal
- Longlife Milk
- Longlife Juice
- Toothbrush & Toothpaste
- Soap/Shower Gel
- Toilet Rolls
- Laundry Powder

### HOW TO DONATE FOOD OVER THE NET?

DAY	TIME	ADDRESS
Tuesday or Friday	11.30am – 2pm	Camden Foodbank, 14 Pratt Mews, NW1 0AD.

### HOW TO DONATE MONEY?

#### THROUGH JUST GIVING

<https://checkout.justgiving.com/c/3445418>

100% of your donation will go directly to Camden Foodbank.

Selecting **GIFT AID** which will increase your donation.

**FOR CHEQUES/DIRECT DEBITS AND OTHER WAYS OF GIVING** <https://camden.foodbank.org.uk/give-help/donate-money>

<https://camden.foodbank.org.uk/give-help/donate-money>

Camden Foodbank 14 Pratt Mews, London NW1 0AD.

Phone for food deliveries only Tuesdays and Fridays – 020 7387 4551

[info@camden.foodbank.org.uk](mailto:info@camden.foodbank.org.uk)

<https://Camden.foodbank.org.uk>

Camden Foodbank registered charity in England and Wales 1084806



Just Giving for Camden Foodbank



### School T-Shirts etc:

Take a look at this site <https://shop.spreadshirt.co.uk/FitzjohnsNW3> where you can order and create t-shirts, etc in a variety of colours and sizes (children's and adults).

The logo is based on the iconic street signs around Hampstead.

Please note that you can "personalise" each item and choose any item from the site.

We receive approximately 20% (plus £3 for the logo) for each sale.

A tip: To try to cut down a bit on postage charges why not club together as a class.

## Turn your weekly shopping into BIG donations for our school

No matter who you shop with, or how you shop, you can now raise FREE MONEY for Fitzjohn's!

Supermarket	Home delivery		Click & Collect	
	First order	Existing customer order	First order	Existing customer order
<b>TESCO</b>	£3.50	£1.75	£3.50	£1.75
<b>Morrisons</b>	£3.50	£1.50	£3.00	£1.50
<b>ASDA</b>	£2.50	£1.00	×	×
<b>MARKS &amp; SPENCER</b>	£1.23	90p	£1.23	×
<b>Sainsbury's</b>	£4.00	60p	£4.50	60p
<b>Iceland</b>	1.50%	0.50%	×	×
<b>ocado</b>	1.50%	0.50p	×	×

Minimum spend requirements apply. Full retailer T&Cs apply. Donation rates may change from time to time, rates above were correct as of 18/03/2023.

### Raise a donation every time you shop with your supermarket

Last year we raised close to £1,000 just from parents using easyfundraising for their online shopping. It takes a couple of minutes to set-up, and that's it!

These donations really help us, so it would be great if you could take a moment to get started: [easyfundraising for Fitzjohn's](https://www.easyfundraising.com/charity/Fitzjohns)  
Thank you!



Your Premium Outlet for Kids' Stuff

Some of the discounts and deals you can find on KIDSiE



**Huffy Bikes**

30% off RRP

**Scoot & Ride**

30% off RRP

**Skate Hut**

50% off RRP

Get BIG discounts on:  
Bikes, Scooters, Skateboards,  
Roller Skates, Heelies, and more!

Use this referral code to get £5 off and we will donate £5 to your school PTA

FITZJOHNSCAMDEN

[www.kidsie.com](http://www.kidsie.com)

**STANDING ORDER MANDATE**

<b>To The Manager</b>	
Bank Name	
Bank Address (optional)	
Bank Sort Code	
Bank Account Number	
<b>Please Pay</b>	
Payee Bank Name	Lloyds TSB
Payee Account Name	Fitzjohn's School Association
Payee Sort Code	30-93-80
Payee Account Number	00008235
Payment Amount (circle)	£30   £50   £100   £250   £500   Other: £
Frequency	STANDING ORDERS from my account as detailed in this instruction on the ___ day of every month
Date of First Payment	
Reference	Fitzjohn's Parents Appeal
<b>Customer Details</b>	
Print Name	
Signature	
Date	
Address	
Email	
Phone number	
<b>GIFT AID IT—UK TAXPAYERS!</b>	
<p>For every pound you give to us we get an extra 25p from the INLAND REVENUE so please sign below if you are a UK taxpayer*</p> <p>I am a UK taxpayer and under the GIFT AID scheme, I would like the Fitzjohn's School Association to claim back the tax on any donations I make until further notice OR have made in the past 4 years.</p> <p>Signature _____</p> <p><i>*To qualify for Gift Aid what you pay in UK income tax or capital gains tax must be at least equal to the amount we will claim in the tax year from the Inland Revenue. NB. Please notify us if you change your address. NB. You can cancel your standing order form at anytime.</i></p>	

PLEASE RETURN THE COMPLETED FORM TO THE FITZJOHN'S PRIMARY SCHOOL'S OFFICE.

Registered Charity No. 102 9947